



Jan 18, 2025

Listing ID 2025.119.458

Type of Item loom

Manufacturer Kromski

Description 24in walnut rigid heddle loom with 3 reeds a floor stand and 2 project kits for hand towels. All parts included.

Location of Item Centerville MA..cape cod

Type of Loom Rigid Heddle

Loom Model

Weaving Width

No. Shafts

No. Treadles

Included Equipment

Asking Price 500.00

Method Cash, Paypal or venmo

When Available now

Willing to Ship? No

More Pictures Available? No



Jan 16, 2025

Listing ID 2025.118.634

Type of Item loom

Manufacturer Leclerc

Description NOT MY PICTURE, my loom is in storage.

Location of Item Billerica, Mass.

Type of Loom Jack

Loom Model OTHER

Weaving Width 20"

No. Shafts 4

No. Treadles 6

Included Equipment This is the Leclerc Medico-S from long ago. It is a table loom, similar to the Dorothy, but has a treadle stand to turn it into a floor loom. The best of both worlds!

Asking Price 500

Method Paypal, Venmo, Cash,
Cashier's check.

When Available now

Willing to Ship? No

More Pictures Available? No





Jan 16, 2025

Listing ID 2025.117.634

Type of Item loom

Manufacturer Leclerc

Description My well-loved Nilart isn't coming with me to senior living.

Location of Item Bradford, MEBillerica, Mass.

Type of Loom Jack

Loom Model Nilart

Weaving Width 60"

No. Shafts 12

No. Treadles 14

Included Equipment Includes sectional warping equipment: spool rack, sectional beam dividers, etc. Has parts for a fly-shuttle but is not currently working. Will include shuttles, lease sticks, and more. DOES NOT INCLUDE A BENCH.

Asking Price 1500

Method Paypal, Venmo, Cash,
Cashier's check.

When Available now

Willing to Ship? No

More Pictures Available? No



Jan 14, 2025

Listing ID 2025.116.059

Type of Item loom

Manufacturer AVL

Description AVL's rug looms are extremely sturdy and can hold an amazing tension. I have woven a few rugs plus other items such as table runners and a throw. It is very good for weaving anything from heavy rugs to lightweight fabrics. I am the second owner and although I've had it for many years, I have used it very little.
It is air operated with air for raising the harnesses up and then down in two separate motions. Current cost for the loom is over \$39,000.

Location of Item Bradford, ME

Type of Loom Dobby - computer/electronic

Loom Model

Weaving Width 48"

No. Shafts 12

No. Treadles

Included Equipment Loom #02326, Built in 1997
Air Compu-Dobby 4.5 P 12H
Inserted eye heddles
2 high capacity sectional warp beams
Auto cloth take up
Auto cloth advance
Track for tension box or selvedge rollers
Three Reeds

Asking Price 10.000

Method Zelle, Cash

When Available now

Willing to Ship? No

More Pictures Available? Yes





Nov 27, 2023

Listing ID 2025.115.005

Type of Item loom

Manufacturer AVL

Description This loom was donated to Weavers' Guild of Boston.
AVL 48" 16S Compu-dobby with a sectional warp beam, auto fabric advance,
fly shuttle.
PRICE REDUCED

Location of Item LEOMINSTER, MA

Type of Loom Dobby - computer/electronic

Loom Model

Weaving Width 48"

No. Shafts 16

No. Treadles

Included Equipment Included Spool rack and box of spools, double ended electric bobbin winder with counter, shuttles, pirns and other small accessories.

Asking Price \$4500 + Tax 281.25
= \$4781.25

Method cash, check, credit CARD

When Available now

Willing to Ship? No

More Pictures Available? No





Jan 11, 2025

Listing ID 2025.114.575

Type of Item loom

Manufacturer Leclerc

Description This Mira II loom (similar to the Fanny) built in 2021. It is a very solid and sturdy loom that has a wide shed, and is easy to treadle. With easy access to the heddles, this loom is a breeze to thread. If I had more space I would hold on to this gem. It is versatile and exceptionally well built.

Location of Item Putney

Type of Loom Counterbalance

Loom Model Fanny

Weaving Width 45"

No. Shafts 4

No. Treadles 6

Included Equipment A Leclerc Raddle - 43"
10 dent and 12 dent reeds

Asking Price \$3,000

Method Cash, ApplePay, Venmo,
PayPal

When Available now

Willing to Ship? No

More Pictures Available? Yes





Jul 19, 2024

Listing ID 2025.113.592

Type of Item loom

Manufacturer Beka

Description Bought new in 2001 while earning a textile degree. Much loved but I'm moving to senior residence where there is little room.

Location of Item Plymouth, MA

Type of Loom Jack

Loom Model

Weaving Width 60"

No. Shafts 8

No. Treadles 10

Included Equipment Includes an extra reed, heddles, shuttles, bench, yarn, & textbooks.

Asking Price REDUCED TO
\$1900

Method Cash or certified bank check

When Available now

Willing to Ship? No

More Pictures Available? Yes



Oct 5, 2024

Listing ID 2025.112.249

Type of Item loom

Manufacturer Louet

Description This lightly used loom in excellent condition is perfect for people learning to weave, those who want to upgrade from a rigid-heddle loom or those that want a light weight travel, workshop, or sample loom. Excellent for scarves and other narrow goods.
Compared to a rigid-heddle loom, it is easier to operate and has a more even warp tension., It has a large shed of 1¾", and you have flexibility in patterning capabilities and the number of threads per inch.
PRICE REDUCED

Location of Item Ayer, MA

Type of Loom Table

Loom Model Erica

Weaving Width 30 cm (11.7")

No. Shafts 4

No. Treadles

Included Equipment Includes a 2 shaft expansion kit (already installed), two reeds (10 & 12 dent), 200 Texsolv heddles, 2 stainless steel tie on bars, a TempoTreadle array (does not include a system unit - see LoftyFiber.com), and the Louet Erica stand.
It measures 18"x 24 1/2" x 16 1/2", folds down easily to 6 1/4" high, and weighs under 8 lbs.
Combined value over \$1000

Asking Price \$600 OBO

Method cash or cashiers check

When Available now

Willing to Ship? No

More Pictures Available? Yes





Jan 8, 2025

Listing ID 2025.111.613

Type of Item loom

Manufacturer Macomber

Description Model: B4D
Serial #: 4767

Location of Item Hartford, CT

Type of Loom Jack

Loom Model OTHER

Weaving Width 48"

No. Shafts 8

No. Treadles 10

Included Equipment Fully open loom dimensions:
Approx. 44" deep and 60" wide
Double back beam
Loom has room to add 2 more harnesses.
Comes with 15 dent reed

Asking Price \$1400

Method Cash, credit, venmo, paypal.

When Available now

Willing to Ship? No

More Pictures Available? No





Jan 8, 2025

Listing ID 2025.110.613

Type of Item loom

Manufacturer Leclerc

Description This is a Mira - the LeClerc Mira, unlike the Fanny, does not fold.

Location of Item Hartford, CT

Type of Loom Counterbalance

Loom Model Fanny

Weaving Width 45"

No. Shafts 4

No. Treadles 6

Included Equipment bench, one reed (10 or 12, your choice) in very good condition. Also comes with optional sectional warping equipment, lease sticks, a tension box, sectional warp beam rakes (New - never used). Loom has had only 2 owners. Most recent owner had for 25 years.
FYI, the LeClerc Mira is like the LeClerc Fanny, but doesn't fold
Second additional reed (10 or 12) can be purchased for \$60.

Asking Price \$1000 OBO

Method Cash, credit, venmo, paypal.

When Available now

Willing to Ship? No

More Pictures Available? No





Jan 8, 2025

Listing ID 2025.110.613

Type of Item loom

Manufacturer Leclerc

Description This is a Mira - the LeClerc Mira, unlike the Fanny, does not fold.

Location of Item Hartford, CT

Type of Loom Counterbalance

Loom Model Fanny

Weaving Width 45"

No. Shafts 4

No. Treadles 6

Included Equipment bench, one reed (10 or 12, your choice) in very good condition. Also comes with optional sectional warping equipment, lease sticks, a tension box, sectional warp beam rakes (New - never used). Loom has had only 2 owners. Most recent owner had for 25 years.
FYI, the LeClerc Mira is like the LeClerc Fanny, but doesn't fold
Second additional reed (10 or 12) can be purchased for \$60.

Asking Price \$1000 OBO

Method Cash, credit, venmo, paypal.

When Available now

Willing to Ship? No

More Pictures Available? No





Jan 8, 2025

Listing ID 2025.109.633

Type of Item loom

Manufacturer OTHER

Description Herald Looms - Antique, but I am not sure what year it's from, I hadn't heard of Herald looms before getting this one.
-In good condition for an antique but needs a couple of minor repairs: the two wooden pieces that hold up the sectional warp beam need to be repaired with wood glue, or replaced and the ribbon tapes need to be repaired or replaced.
-Currently disassembled due to its size and I needed to move it through a doorway.

Location of Item Mont Vernon, NH

Type of Loom Jack

Loom Model

Weaving Width 47 in.

No. Shafts 8

No. Treadles 10

Included Equipment 1 shuttle with a bobbin and extra heddles included
warping board in back of photo NOT included

Asking Price 400

Method Mont Vernon, NH

When Available ASAP

Willing to Ship? No

More Pictures Available? No



Jun 10, 2024

Listing ID 2025.108.583

Type of Item loom

Manufacturer Structo

Description (24" w, 18"d)

Location of Item South Burlington

Type of Loom Table

Loom Model

Weaving Width 20"

No. Shafts 4

No. Treadles

Included Equipment PRICE REDUCED!

Asking Price 180

Method cash, check

When Available now

Willing to Ship? No

More Pictures Available? No





Jun 10, 2024

Listing ID 2025.107.583

Type of Item spinning wheel

Manufacturer Ashford

Description New: New Zealand Ashford, scots tension -brake system
(15"w, 33.5"h, 36"d, wheel diameter 22")

Location of Item South Burlington

Type of Loom

Loom Model

Weaving Width

No. Shafts

No. Treadles

Included Equipment PRICE REDUCED!

Asking Price 650

Method cash, check

When Available now

Willing to Ship? No

More Pictures Available? Yes





Jun 10, 2024

Listing ID 2025.106.583

Type of Item spinning wheel

Manufacturer OTHER

Description New: Country Craftsmen #24 with distaff
(22"w, 37"h, 38" d)

Location of Item South Burlington

Type of Loom

Loom Model

Weaving Width

No. Shafts

No. Treadles

Included Equipment PRICE REDUCED!

Asking Price 275

Method cash, check

When Available now

Willing to Ship? No

More Pictures Available? Yes





Jun 10, 2024

Listing ID 2025.105.583

Type of Item spinning wheel

Manufacturer OTHER

Description New: Haldane, Gateside Fife, Scotland, castle style,
upright wheel
(2 extra flat spindles)
(16.5" wheel diameter, 37" h)

Location of Item South Burlington

Type of Loom

Loom Model

Weaving Width

No. Shafts

No. Treadles

Included Equipment PRICE REDUCED!

Asking Price 175

Method cash, check

When Available now

Willing to Ship? No

More Pictures Available? Yes





Dec 14, 2024

Listing ID 2025.104.630

Type of Item loom

Manufacturer Leclerc

Description Bought brand new from LeClerc in Quebed in January 2024. Just not that into weaving. My loss is your gain, save \$1000 on basically a brand new loom. Paid \$3517.

Location of Item Brunswick, Maine

Type of Loom Counterbalance

Loom Model Fanny

Weaving Width 45

No. Shafts 4

No. Treadles 6

Included Equipment 9 yard Warping board included
PRICE REDUCED!

Asking Price \$2500

Method Venmo, paypal, cashapp, cash

When Available now

Willing to Ship? No

More Pictures Available? No





Jan 5, 2025

Listing ID 2025.002.536

Type of Item spinning wheel

Manufacturer OTHER

Description Patent Pendulum Wheel
Patented May 22, 1868 E. Glendillen. This counterbalance or pendulum wheel enables the spinner to sit and still spin on the equivalent of a great wheel. It is rather similar in motion as a woolen mule and is best suited for rovings. It can take a bit of skill to master, but great fun and speedy production. The treadle and wood tension handle have been replaced – copied from the worn parts. Fun wheel when exhibiting. The wheel has been unassembled to make it easier to transport. Please note the wheel is approximately 52 inches in diameter and the largest piece is 78 inches in height.

Location of Item Gilford, New Hampshire

Type of Loom

Loom Model

Weaving Width

No. Shafts

No. Treadles

Included Equipment

Asking Price 1650.00

Method cash

When Available now

Willing to Ship? Yes

More Pictures Available? No





Nov 7, 2024

Listing ID 2025.001.619

Type of Item miscellaneous equipment

Manufacturer PRIVATE/SELF BUILT

Description These inserted eye metal heddles were manufactured by my grandfather who ran Paragon Heddle Company in Worcester, MA until the late 1970's. He manufactured a batch of approximately 20,000 during a downturn in anticipation of a large customer order that never materialized. This picture is of one of the bundles with 500 heddles. They measure 21-3/4" end-to-end and the heddle bar opening at the top and bottom of the heddles are each 5/8" L x 3/16" W.

I have no idea how to price these. Online comparisons seem all over the place. I'm mostly interested in having them in the hands of someone who will appreciate/use them. Any reasonable offer will be accepted.

Location of Item Westborough, MA

Type of Loom

Loom Model

Weaving Width

No. Shafts

No. Treadles

Included Equipment

Asking Price \$20 or Best Offer

Method Cash or certified bank check.
Buyer pays shipping.

When Available now

Willing to Ship? Yes

More Pictures Available? No





Jun 10, 2024

Listing ID 2025.000.584

Type of Item loom

Manufacturer Harrisville Designs

Description A heavy-duty loom with sectional warp beam designed for rug weaving. The loom is in excellent and complete condition and has the original manual and bill of sale from Harrisville Designs.

Location of Item North East PA (in the NW corner near Erie)

Type of Loom Countermarche

Loom Model Harrisville Rug Loom

Weaving Width 45

No. Shafts 4

No. Treadles 8

Included Equipment Includes:
Height-adjustable built-in bench
Warp Extender/Tension Equalizer
Collingwood Shaft Switching Mechanism
Books, shuttles and tools are also available--inquire

Asking Price 4000

Method PayPal, Venmo, Zelle and cash

When Available now

Willing to Ship? No

More Pictures Available? Yes





May 31, 2024

Listing ID 2024.999fh.478

Type of Item loom

Manufacturer Leclerc

Description PRICE REDUCED

Location of Item Alton, NH

Type of Loom Jack

Loom Model Nilus

Weaving Width 36"

No. Shafts 12

No. Treadles 14

Included Equipment Includes a bench, shuttle, and a 12 dent reed.
I'm selling the loom because I just splurged and bought my first brand new loom.

Asking Price \$800

Method Cash

When Available now

Willing to Ship? No

More Pictures Available? No





Nov 3, 2024

Listing ID 2024.999ff.303

Type of Item loom

Manufacturer Leclerc

Description Very good working condition.
PRICE REDUCED

Location of Item Wakefield, RI

Type of Loom Counterbalance

Loom Model Nilus

Weaving Width ~46"

No. Shafts 4

No. Treadles 6

Included Equipment The loom is 52" wide, 52" high, and 37" deep.

Asking Price \$550 OBO

Method Cash or check

When Available now

Willing to Ship? No

More Pictures Available? No





Dec 17, 2024

Listing ID 2024.999fe.631

Type of Item loom

Manufacturer OTHER

Description CRANBROOK/BEXEL, ideal for creating a variety of textiles, from heavy, plush rugs to tablecloths and napkins to intricate wall hangings

Location of Item La Conchita, CALIFORNIA

Type of Loom Countermarche

Loom Model Cranbrook

Weaving Width 60

No. Shafts 8

No. Treadles 10

Included Equipment includes bench, lease sticks and reed

Asking Price 1000.00

Method cash or e-cash

When Available now

Willing to Ship? Yes

More Pictures Available? Yes



Aug 2, 2024

Listing ID 2024.999fd.478

Type of Item spinning wheel

Manufacturer OTHER

Description Canadian Production Wheel from Ste Hyacinthe Quebec. . Cast iron treadle and tilt tension. Beautiful patina. About 100 years old.

Location of Item Lincolnville Beach, Maine

Type of Loom

Loom Model

Weaving Width

No. Shafts

No. Treadles

Included Equipment PRICE REDUCED!

Asking Price \$300

Method cash

When Available now

Willing to Ship? No

More Pictures Available? Yes





May 6, 2024

Listing ID 2024.999fc.478

Type of Item loom

Manufacturer OTHER

Description Wonderful old Gallinger loom of cherry wood. Sectional warp beam and friction tension both need a little work. Heavy metal fittings.

Location of Item Lincolnville Beach, Maine

Type of Loom Counterbalance

Loom Model

Weaving Width 40"

No. Shafts 4

No. Treadles 4

Included Equipment Loom is currently dismantled. Google for photos!
PRICE REDUCED!

Asking Price \$325

Method cash at pickup

When Available now

Willing to Ship? No

More Pictures Available? No



Nov 3, 2024

Listing ID 2024.999fb.618

Type of Item loom

Manufacturer Leclerc

Description Folds partially for storage or transporting
PRICE REDUCED

Location of Item TAUNTON, MA

Type of Loom Jack

Loom Model Nilus

Weaving Width 45"

No. Shafts 4

No. Treadles 6

Included Equipment warping board, Flat steel heddles, 12 dent reed, lease sticks, shuttles, bobbins, misc tools, Books, some yarn. Willing to provide tailgate delivery within 50 miles.

Asking Price \$ 1,000.00 or
reasonable offer

Method CASH

When Available now

Willing to Ship? No

More Pictures Available? Yes





Sep 25, 2024

Listing ID 2024.999ew.609

Type of Item loom

Manufacturer Leclerc

Description Colonial floor loom plus multiple accessories. Excellent condition.
PRICE REDUCED

Location of Item Danville, VT

Type of Loom Counterbalance

Loom Model Nilus

Weaving Width 60 inches

No. Shafts 8

No. Treadles 10

Included Equipment 3 reeds (4,10,12), Leclerc flying shuttle beater, Leclerc small loom bench, Leclerc floor warping mill, 6 boat shuttles, G.Anderssons bobbin winder, umbrella swift, multiple bobbins.
Seller is willing to deliver and assist with reassembly of the loom.

Asking Price \$2250 negotiable

Method cash

When Available now

Willing to Ship? Yes



able? Yes



Nov 30, 2024

Listing ID 2024.999ev.628

Type of Item loom

Manufacturer

Description Dusty but sturdy. Hasn't been used for years but will make someone happy. Located in my attic.

Location of Item Weston, Massachusetts

Type of Loom Jack

Loom Model

Weaving Width

No. Shafts

No. Treadles

Included Equipment I am not a weaver so the picture will have to do!

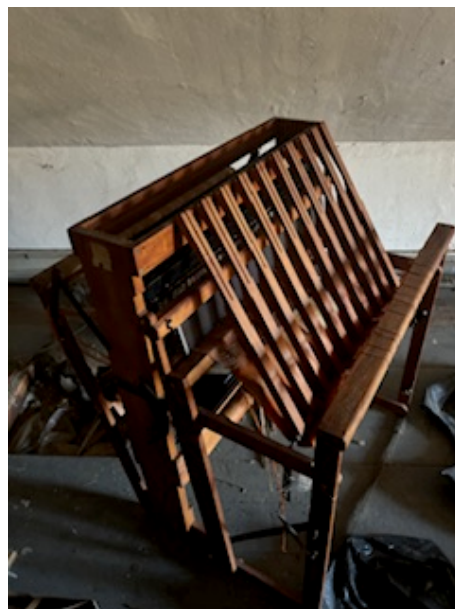
Asking Price \$900

Method Cash, cashiers check

When Available now

Willing to Ship? No

More Pictures Available? No





Nov 30, 2024

Listing ID 2024.999eu.628

Type of Item spinning wheel

Manufacturer

Description Has not been used in years and does not have all of its parts.

Location of Item Massachusetts

Type of Loom Jack

Loom Model

Weaving Width

No. Shafts

No. Treadles

Included Equipment

Asking Price \$200

Method Cash, cashiers check

When Available now

Willing to Ship? No

More Pictures Available? No





Nov 24, 2024

Listing ID 2024.999et.626

Type of Item loom

Manufacturer Harrisville Designs

Description Beautiful Classic Solid Cherrywood floor loom and bench seat, in excellent condition.

Location of Item North Kingstown, Rhode Island

Type of Loom Jack

Loom Model

Weaving Width 40"

No. Shafts 8

No. Treadles 8

Included Equipment Includes lease sticks, assorted reeds (6,8,10,12 and 15 dent reeds), extra heddles.

Asking Price 2000

Method Cashiers Check

When Available now

Willing to Ship? No

More Pictures Available? No





Nov 29, 2024

Listing ID 2024.999es.627

Type of Item loom

Manufacturer Macomber

Description Great condition. Serial No. 1809. Probably 40-50 years old. Loom has not been used in two years.

Location of Item York, Maine

Type of Loom Jack

Loom Model

Weaving Width 40 inches

No. Shafts 8

No. Treadles 10

Included Equipment Chair/Stool with cabinet in seat. 4 reeds. Warping board, cotton yarn (many earth colors) for rug weaving. Other yarn as well. Shuttle, heddle hook, raddle, and more.

Asking Price 1500.00

Method Cash, check

When Available now

Willing to Ship? No

More Pictures Available? Yes





Nov 24, 2024

Listing ID 2024.999es.625

Type of Item loom

Manufacturer Leclerc

Description The plate on the loom states NU-90 cm. 4L-84-03

Location of Item Middletown, RI

Type of Loom Jack

Loom Model Nilus

Weaving Width

No. Shafts

No. Treadles

Included Equipment

Asking Price \$1000

Method Venmo, cash

When Available now

Willing to Ship? No

More Pictures Available? Yes





Nov 21, 2024

Listing ID 2024.999er.624

Type of Item spinning equipment

Manufacturer OTHER

Description Strauch Finest drum carder

Location of Item Ithaca NY

Type of Loom Table

Loom Model

Weaving Width

No. Shafts

No. Treadles

Included Equipment Hardly used

Asking Price 700

Method Cash, PayPal, check

When Available now

Willing to Ship? Yes

More Pictures Available? No





Nov 20, 2024

Listing ID 2024.999eq.623

Type of Item spinning wheel

Manufacturer Majacraft

Description Majacraft Rose Spinning Wheel. Beautiful loom from New Zealand. Currently selling for \$1,750 - \$2,050. Has not been used except for one class at Belfast Fiber Arts. Excellent condition. Willing to deliver within 100 miles (or Boston).

Location of Item Owls Head, ME

Type of Loom

Loom Model

Weaving Width

No. Shafts

No. Treadles

Included Equipment includes the Rose Carrier which can be used as a 3-bobbin lazy kate.
includes two flyers with delta and fine fibre orifice
ratios extend from 4.8 to 24.1 using the pulleys supplied
comes with four (4) plastic bobbins
dependable scotch tension for smooth and easy spinning.
More info at: https://www.majacraft.co.nz/?page_id=30

Asking Price \$1450

Method Cash, Paypal

When Available now

Willing to Ship? No

More Pictures Available? Yes





Nov 14, 2024

Listing ID 2024.999e1.622

Type of Item loom

Manufacturer Leclerc

Description All needed equipment is available and loom is in excellent condition

Location of Item Quincy, MA

Type of Loom Jack

Loom Model Nilus

Weaving Width

No. Shafts

No. Treadles

Included Equipment

Asking Price \$1500

Method Cash, Venmo, Check

When Available now

Willing to Ship? No

More Pictures Available? No





Nov 13, 2024

Listing ID 2024.999eh.614

Type of Item spinning wheel

Manufacturer Ashford

Description RADITIONAL SD
Used but well loved. This wheel is still in production so parts and accessories are still available. This from MFG website:
Traditional Single Drive
The most popular spinning wheel in the world.
-proven design for over 40 years
-large 56cm (22ins) wheel
-robust

Location of Item Tiverton, RI

Type of Loom

Loom Model

Weaving Width

No. Shafts

No. Treadles

Included Equipment

Asking Price \$475

Method Cash / PayPal

When Available now

Willing to Ship? No

More Pictures Available? Yes





Nov 3, 2024

Listing ID 2024.999dy.617

Type of Item loom

Manufacturer Glimakra

Description This loom has a combination shaft draw/ single unit draw head and is expandable to 75 shafts.

Location of Item New Hope, PA

Type of Loom Drawloom

Loom Model Standard

Weaving Width 100 cm

No. Shafts 8

No. Treadles 40

Included Equipment Price includes all the necessary accessories: heddles, loom extension, lingoes, etc, as well as Becky Ashenden's DVD on how to dress your Swedish draw loom.

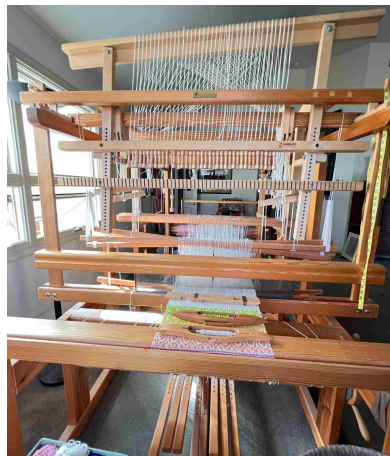
Asking Price 4000

Method PayPal or Cash

When Available now

Willing to Ship? No

More Pictures Available? Yes





Nov 3, 2024

Listing ID 2024.999dx.617

Type of Item loom

Manufacturer Harrisville Designs

Description If new, this loom is over 11K. It has been beautifully maintained. Buyer will need to help disassemble and load (Original documentation is included)

Location of Item New Hope, PA

Type of Loom Countermarche

Loom Model Harrisville Rug Loom

Weaving Width 60"

No. Shafts 4

No. Treadles 8

Included Equipment Collingwood Shaft Switching device
Various shuttles and temples

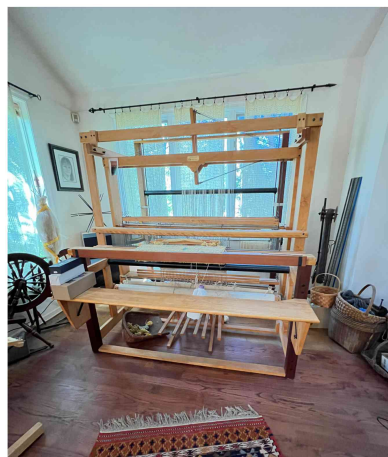
Asking Price 5000

Method PayPal or Cash

When Available now

Willing to Ship? No

More Pictures Available? Yes





Oct 28, 2024

Listing ID 2024.999dr.193

Type of Item loom

Manufacturer Leclerc

Description double back beam (one sectional) and overhead beater.

Location of Item Sandown NH

Type of Loom Dobby - computer/electronic

Loom Model Weavebird

Weaving Width 45"

No. Shafts 16

No. Treadles 2

Included Equipment Includes Leclerc end-feed shuttle with 12 pirns, 2 reeds - 10 & 12 dent, tension box with yardage counter, Handywoman spool rack with 48 cardboard spools, rolling cart that holds computer & black box, original documents & some software.

Asking Price \$7500

Method Cash, certified check

When Available now

Willing to Ship? No

More Pictures Available? Yes





Oct 27, 2024

Listing ID 2024.999dp.616

Type of Item loom

Manufacturer OTHER

Description Built like Leclerc Mira II. Ready to rehab. Needs new cloth on beams, including lots of new materials, three reeds, inserted eye heddles, shuttles, Bring help and a large vehicle to move this!

Location of Item Haverhill, MA

Type of Loom Counterbalance

Loom Model OTHER

Weaving Width 60

No. Shafts 4

No. Treadles 5

Included Equipment Description of the similar Leclerc Mira II - http://www.leclerclooms.com/cat_leus/US18.pdf

Asking Price 200.00

Method cash

When Available now

Willing to Ship? No

More Pictures Available? Yes





Oct 26, 2024

Listing ID 2024.999dn.615

Type of Item loom

Manufacturer Macomber

Description Circa 1980. Wood is solid. Heddles have some rust. It needs TLC and can be brought back to life. I'm donating it to someone who wants to renovate it and use it. Pick up and moving will be takers responsibility. It's heavy yet it's in a 3 season porch and no stairs are involved.

Location of Item Portland, Maine

Type of Loom

Loom Model

Weaving Width 48 inches

No. Shafts 8

No. Treadles 10

Included Equipment all equipment that i can find that go with it are included. 40 years ago, i thought i was going to be a weaver. I have a bunch of accessories that go with it. It may need some replacement parts yet overall is in fair shape. the wood of macomber is exceptional.

Asking Price Love

Method None

When Available now

Willing to Ship? No

More Pictures Available? No



Oct 4, 2024

Listing ID 2024.999dg.497

Type of Item loom

Manufacturer Norwood

Description Cherry Norwood loom, includes original bench (bench needs a bit of glue). Teksolv cords, inserted eye heddles. Have sectional beam pegs. Reed not included. Missing crank handle but can be purchased elsewhere for \$50. Built 1976 Ser. no C44121

Location of Item Southern NH

Type of Loom Jack

Loom Model

Weaving Width 40"

No. Shafts 4

No. Treadles 6

Included Equipment Lovingly cared for, super nice to weave on. Selling only because I found a bigger Norwood.

Asking Price 650

Method Cash only

When Available now

Willing to Ship? No

More Pictures Available? Yes





Sep 30, 2024

Listing ID 2024.999dd.612

Type of Item loom

Manufacturer Norwood

Description Gorgeous Cherry Loom and Bench

Location of Item San Antonio, Texas

Type of Loom Jack

Loom Model

Weaving Width 40"

No. Shafts 8

No. Treadles 10

- Included Equipment**
- High castle (45½"L x 8½"W x 2"D) holds lamp (included)
 - 2 warp beams – 1 solid and 1 sectional
 - Tilt top bench with two side bins
 - 1700 NEW inserted eye heddles
 - 6-, 8-, 10-, 12-, and 15-dent reeds (10-dent and 12-dent reeds are NEW)
 - Original tie-up chains
 - NEW crank
 - NEW raddle made by Lofty Fiber that clips onto high castle
 - NEW Harrisville Angel Wings for 36" loom – can be widened with longer dowels
 - NEW crank

This loom was originally purchased in 1989. I am the second owner.
The cherry finish has aged beautifully.
The loom is in pristine condition.
It folds partially for transport.
Buyer must pick up or arrange shipping.

Asking Price \$3000

Method Venmo, Zelle

When Available now

Willing to Ship? No

More Pictures Available? No



Weavers' Guild of Boston
Used Equipment List





Sep 29, 2024

Listing ID 2024.999dc.610

Type of Item loom

Manufacturer Louet

Description The David II has a large shed (5"), a sliding beater which always hits the fell at the perfect angle and a removable back beam (so it can go through doorways).
Dimensions (WDH) 34 1/4" x 33 1/2" x 50" (87 x 85 x 127 cm)
Tempo Treadle accepts any .wif file and will keep your place while threading. It also keeps your place while weaving and will warn you if you press an incorrect treadle(s), invaluable for elaborate 8-shaft patterns!
New the loom and accessories would sell for over \$8600 plus tax.

Location of Item Lunenburg, MA

Type of Loom

Loom Model David

Weaving Width

No. Shafts

No. Treadles

Included Equipment 10 and 12 dent SS reeds
sectional beam
2 lease sticks, 2 tie-on bars
16+ warp sticks
reed/sley hook
raddle covers
Harrisville loom bench
Harrisville 14 yd. Warping board
Tempo Treadle
Schacht boat shuttle, 4 plastic bobbins

Asking Price 5300

Method Cash, Zelle, Venmo, Ca\$h,
personal check (WGB members
only)

When Available now

Willing to Ship? No

More Pictures Available? Yes



Weavers' Guild of Boston
Used Equipment List





Sep 26, 2024

Listing ID 2024.999db.611

Type of Item loom

Manufacturer Gilmore

Description 1999 Gilmore copy (even Bob had a hard time telling not original) - every inch polished and cared for in last 60 days. 4th owner - excellent shape. custom raddle, angled bench with pullthrough drawer. about 1500 heddles perfect condition, plus tools. Can discuss shipment. ISO Glimakra 40" standard

Location of Item Sacramento, CA

Type of Loom Jack

Loom Model Compact

Weaving Width 40"

No. Shafts 8

No. Treadles 12

Included Equipment shuttles, warp sticks, custom stainless steel apron tie on bars (original wood ones included), wood heddle jig, sley hooks, bench

Asking Price 2,850 plus shipping

Method cash, perhaps venmo, perhaps zelle, cashier's check

When Available now

Willing to Ship? Yes

More Pictures Available? No





Sep 20, 2024

Listing ID 2024.999cu.607

Type of Item loom

Manufacturer Ashford

Description Including stand, comes with 7.5 heddle and accessories as seen in picture. Bought in July 2024. Ashford wax applied.

Location of Item Woonsocket, RI

Type of Loom Rigid Heddle

Loom Model

Weaving Width 32"

No. Shafts 2

No. Treadles

Included Equipment It's a great rigid heddle loom.
My back will not allow me to warp it.

Asking Price \$450

Method Cash

When Available now

Willing to Ship? No

More Pictures Available? No





Sep 20, 2024

Listing ID 2024.999ct.107

Type of Item loom

Manufacturer Structo

Description Structo Art Craft Table Loom, weaves 14" wide. This loom is in perfect working condition, and comes with a 10 and 12 dent reed, a Leclerc boat shuttle and 4, 4" bobbins. Pick up in Boston, MA or meet up outside the city.

Location of Item Boston, MA

Type of Loom Table

Loom Model

Weaving Width 14

No. Shafts 4

No. Treadles

Included Equipment

Asking Price 300

Method CC, Venmo, Cash

When Available now

Willing to Ship? No

More Pictures Available? No





Sep 15, 2024

Listing ID 2024.999cr.606

Type of Item loom

Manufacturer Ashford

Description Great condition, assembled and ready for pick-up. Images available upon request.

Location of Item Webster

Type of Loom Table

Loom Model

Weaving Width 24"

No. Shafts 16

No. Treadles

Included Equipment accompanying stand

Asking Price 2,000

Method Zelle, Paypal

When Available now

Willing to Ship? No

More Pictures Available? No



Sep 12, 2024

Listing ID 2024.999cq.605

Type of Item loom

Manufacturer UNKNOWN

Description This loom was owned by Robert Heartz. The first teacher of weaving for the League of NH craftsman. Dartmouth NH teacher of weaving. Author of several weaving books. Lots of history.

Location of Item Epping NH

Type of Loom Table

Loom Model

Weaving Width

No. Shafts

No. Treadles

Included Equipment

Asking Price 300 or bo

Method Paypoll, venmo, cash, money
order

When Available now

Willing to Ship? No

More Pictures Available? Yes



Aug 29, 2024

Listing ID 2024.999cj.602

Type of Item spinning equipment

Manufacturer OTHER

Description Acorn Blending Hackle Handcrafted in US of native hardwoods by Sunrise Metalworks, with matching hardwood cover.
Double row of 4 .25" stainless steel tines, set 1/4" on center. 17.5" working width.
Overall dimensions are approximately 20" long by 2" deep and 6.75" tall without cover, 7" tall with cover.
For color blending, fiber prep, or combing.
Never been used.

Location of Item Rockland, Maine

Type of Loom

Loom Model

Weaving Width

No. Shafts

No. Treadles

Included Equipment

Asking Price 175 plus shipping

Method Check (preferred) or PayPal

When Available now

Willing to Ship? Yes

More Pictures Available? Yes





Aug 26, 2024

Listing ID 2024.999ch.231

Type of Item miscellaneous equipment

Manufacturer Schacht

Description Quartet Attachment for 15" Cricket

Location of Item Winchester MA

Type of Loom Table

Loom Model

Weaving Width 13.5"

No. Shafts 4

No. Treadles

Included Equipment Quartet attachment for Cricket (not including Cricket); reed, and stand.
Already assembled and you can switch back and forth with your rigid heddle!
Selling because I upgraded to an 8 shaft.

Asking Price 450

Method paypal, venmo

When Available now

Willing to Ship? No

More Pictures Available? No





Aug 17, 2024

Listing ID 2024.999cf.601

Type of Item loom

Manufacturer Louet

Description This is a beauty of a loom...
*New Condition – rarely used
\$16,700 new
Sectional Warping Beam
Texsolv Heddles
40 cm Stainless Reed – 10 dent
Footprint 24” W x 45” D x 52” H
Overall width with dobbie box and beater bar 37”

Location of Item Green Bay, WI

Type of Loom Dobby - computer/electronic

Loom Model Megado

Weaving Width 16

No. Shafts 16

No. Treadles 1

Included Equipment shipping negotiable – please contact

Asking Price 6500.00

Method cash/Zelle

When Available now

Willing to Ship? Yes

More Pictures Available? Yes





Aug 16, 2024

Listing ID 2024.999cd.599

Type of Item loom

Manufacturer Leclerc

Description Good condition

Location of Item Bridgewater MA

Type of Loom Jack

Loom Model

Weaving Width 36"

No. Shafts 4

No. Treadles 6

Included Equipment Warping mill, warping board, reeds, weaving books, shuttles, bobbin winder, bobbins, misc items

Asking Price \$1,000

Method Check, cash, venmo

When Available now

Willing to Ship? No

More Pictures Available? No





Jun 16, 2024

Listing ID 2024.999cb.005

Type of Item warping reel

Manufacturer PRIVATE/SELF BUILT

Description Horizontal warping reel
2 yard circumference
28" front to back; 48" long

Location of Item Leominster, MA

Type of Loom

Loom Model

Weaving Width

No. Shafts

No. Treadles

Included Equipment PRICE REDUCED!

Asking Price \$50

Method cash and check

When Available now

Willing to Ship? No

More Pictures Available? No





Aug 11, 2024

Listing ID 2024.999bx.598

Type of Item loom

Manufacturer Clement

Description Solid maple 55" loom. Made in Canada. Excellent condition. Includes matching weaving bench, warping board, and various shuttles.

Location of Item Wellfleet, MA

Type of Loom Jack

Loom Model

Weaving Width 45"

No. Shafts 4

No. Treadles 4

Included Equipment

Asking Price 750

Method Check or cash

When Available now

Willing to Ship? No

More Pictures Available? Yes





Aug 11, 2024

Listing ID 2024.999bv.596

Type of Item loom

Manufacturer Macomber

Description Model 34D
Serial # 504-5

Location of Item Bristol, Vermont

Type of Loom

Loom Model Baby Mac

Weaving Width 48

No. Shafts 8

No. Treadles 10

Included Equipment 4 SS reeds
1 Rattle
3 Lease Stick
Bench

Asking Price \$3350.00

Method Certified Check

When Available now

Willing to Ship? No

More Pictures Available? No





Aug 10, 2024

Listing ID 2024.999bu.333

Type of Item warping board

Manufacturer Leclerc

Description Very good condition warping board from Nilus LeClerc. Selling because I have another and don't need two. Holds ~ 13 yards. Retails for \$180 new.

Location of Item West Haven, CT

Type of Loom

Loom Model

Weaving Width

No. Shafts

No. Treadles

Included Equipment

Asking Price \$100

Method Cash or Venmo

When Available now

Willing to Ship? No

More Pictures Available? Yes





Aug 4, 2024

Listing ID 2024.999bt.595

Type of Item loom

Manufacturer Macomber

Description B5 Large Mac #1628 made 1956

Location of Item Haverhill, MA

Type of Loom Jack

Loom Model

Weaving Width 32

No. Shafts 6

No. Treadles 8

Included Equipment A standard Ad-A-Harness Macomber; sectional warp beam, 6 harnesses in place; combs(32): 12, 15, 18 dent; tilting-seat wood bench, 5 traditional shuttles. Briefly used Harrisonville loom parts at half price: 5 Boat-Shuttles(125), Wooden Bobbin Winder(65), Cone Holder(17). Accessories incl with pickup. Possible delivery in region, assembly on site, at cost. Attractive wood, no blemishes, mechanics work as new.

Asking Price \$1400.00

Method cashiers check

When Available now

Willing to Ship? No

More Pictures Available? No



Aug 2, 2024

Listing ID 2024.999br.478

Type of Item spinning equipment

Manufacturer OTHER

Description 4-pitch English-style wool combs made by John Meck in Oregon. Stainless steel tines set in cherrywood handles. Clamps and tine straightener included. Barely used.

Location of Item Lincolnville Beach, Maine

Type of Loom

Loom Model

Weaving Width

No. Shafts

No. Treadles

Included Equipment

Asking Price \$250

Method cash

When Available now

Willing to Ship? Yes

More Pictures Available? Yes





Oct 23, 2023

Listing ID 2024.999be.516

Type of Item spinning wheel

Manufacturer UNKNOWN

Description Used (possibly antique) spinning wheel for sale. The wheel is 19.5" in diameter. It stands 33" high and at the widest point is also 33".

Location of Item Newton, MA

Type of Loom

Loom Model

Weaving Width

No. Shafts

No. Treadles

Included Equipment PRICE REDUCED

Asking Price \$100 or best offer

Method Cash or Bank Check

When Available now

Willing to Ship? No

More Pictures Available? Yes





Feb 8, 2024

Listing ID 2024.930.543c

Type of Item loom

Manufacturer Leclerc

Description Good solid loom. Needs brake work but new parts included.

Location of Item Portland, Maine

Type of Loom Jack

Loom Model Nilus

Weaving Width 45 inches

No. Shafts 4

No. Treadles 6

Included Equipment New 8 dent stainless reed, 500 new inserted eye heddles, new brake band and spring, 2 boat shuttles.
MUST pick up, bring 2 people for moving in a pick-up truck or cargo van. Portland, Maine

Asking Price \$800

Method cash, debit or charge

When Available now

Willing to Ship? No

More Pictures Available? Yes

